

Health and Social Care Testing Flow Charts

1. **COVID-19 contacts: guidance for health and social care staff (Welsh Government Guidance)**

<https://gov.wales/covid-19-contacts-guidance-health-and-social-care-staff-html>

Patient/service user-facing health and social care workers following potential contact with COVID-19
Return to work decision flow chart at Level 0

2. **Guidance to Prevent COVID-19 and Manage Cases, Incidents & Outbreaks in Care Homes, Supported Living and Supported Accommodation Settings in Wales (Public Health Wales guidance)**

<https://phw.nhs.wales/topics/latest-information-on-novel-coronavirus-covid-19/information-for-health-and-social-care/gui-001/>

Interpretation of Regular Testing Results for Residential Care Home Staff (Public Health Wales)

3. **Visits to Care Homes: guidance for providers (Welsh Government guidance)**

[Visits to care homes: guidance for providers \[HTML\] | GOV.WALES](#)

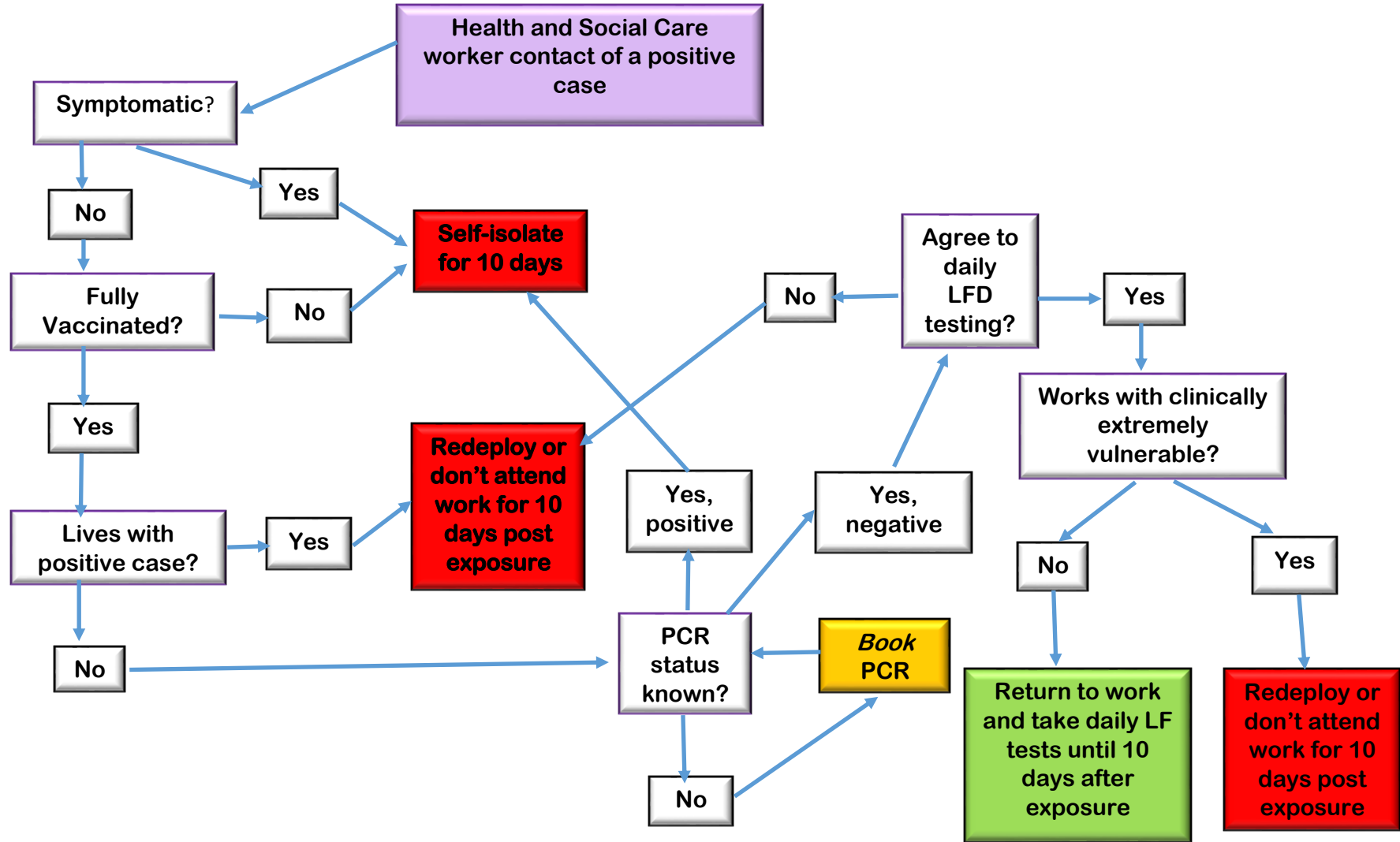
Testing for Visitors to Care Homes flow chart

4. **Returning from travel to Amber list countries: guidance for health and social care staff (Welsh Government Guidance)**

[Returning from travel to Amber list countries: guidance for health and social care staff](#)

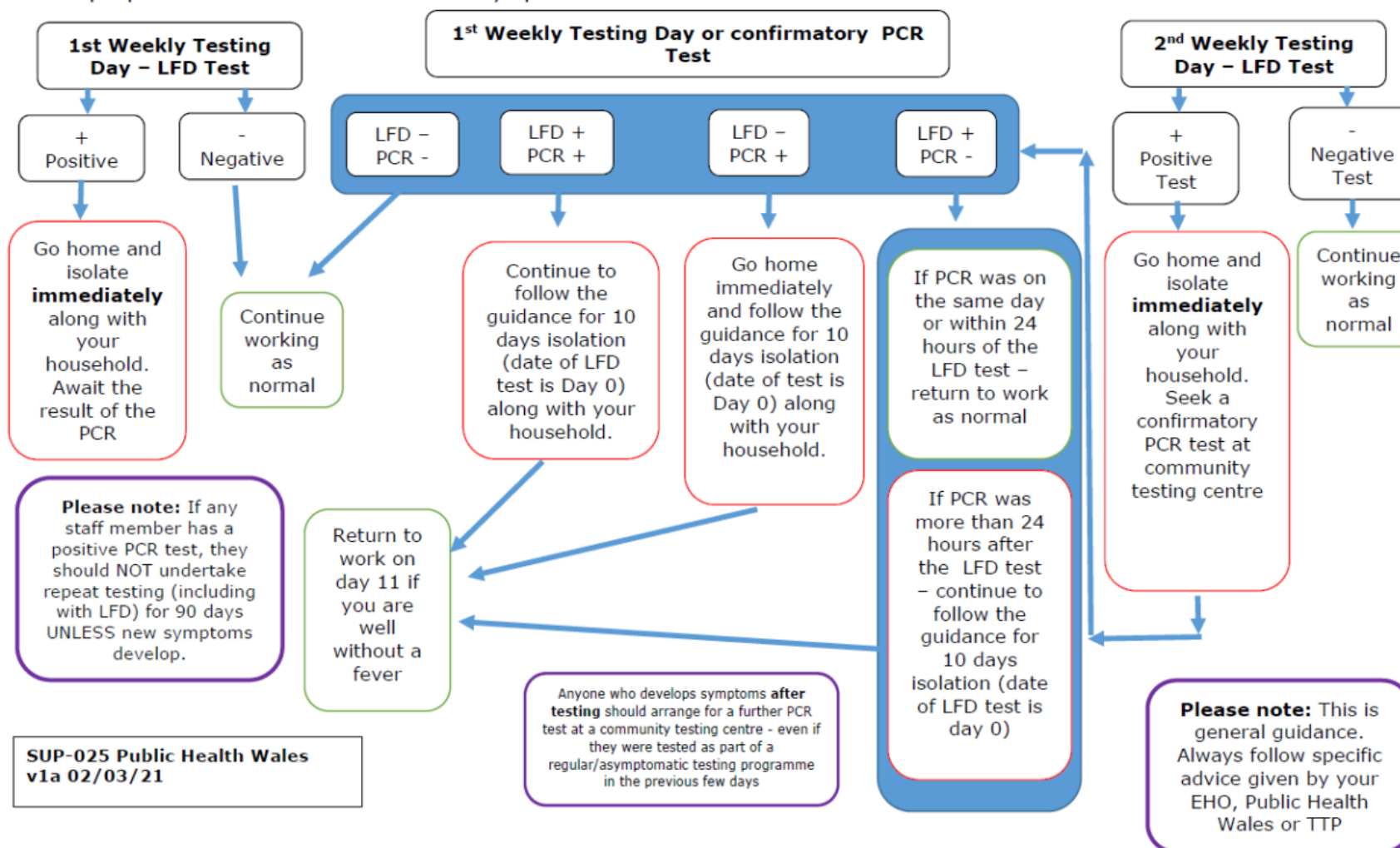
Staff Member Returning from Amber List Country flow chart

1. Patient/service user-facing health and social care workers following potential contact with COVID-19

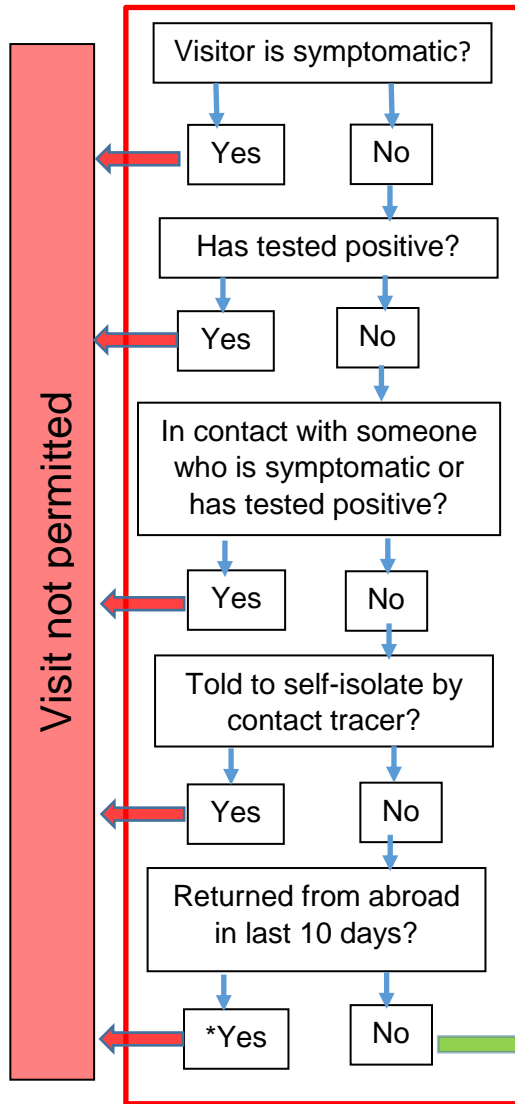


2. Interpretation of Regular Testing Results for Residential Care Home Staff

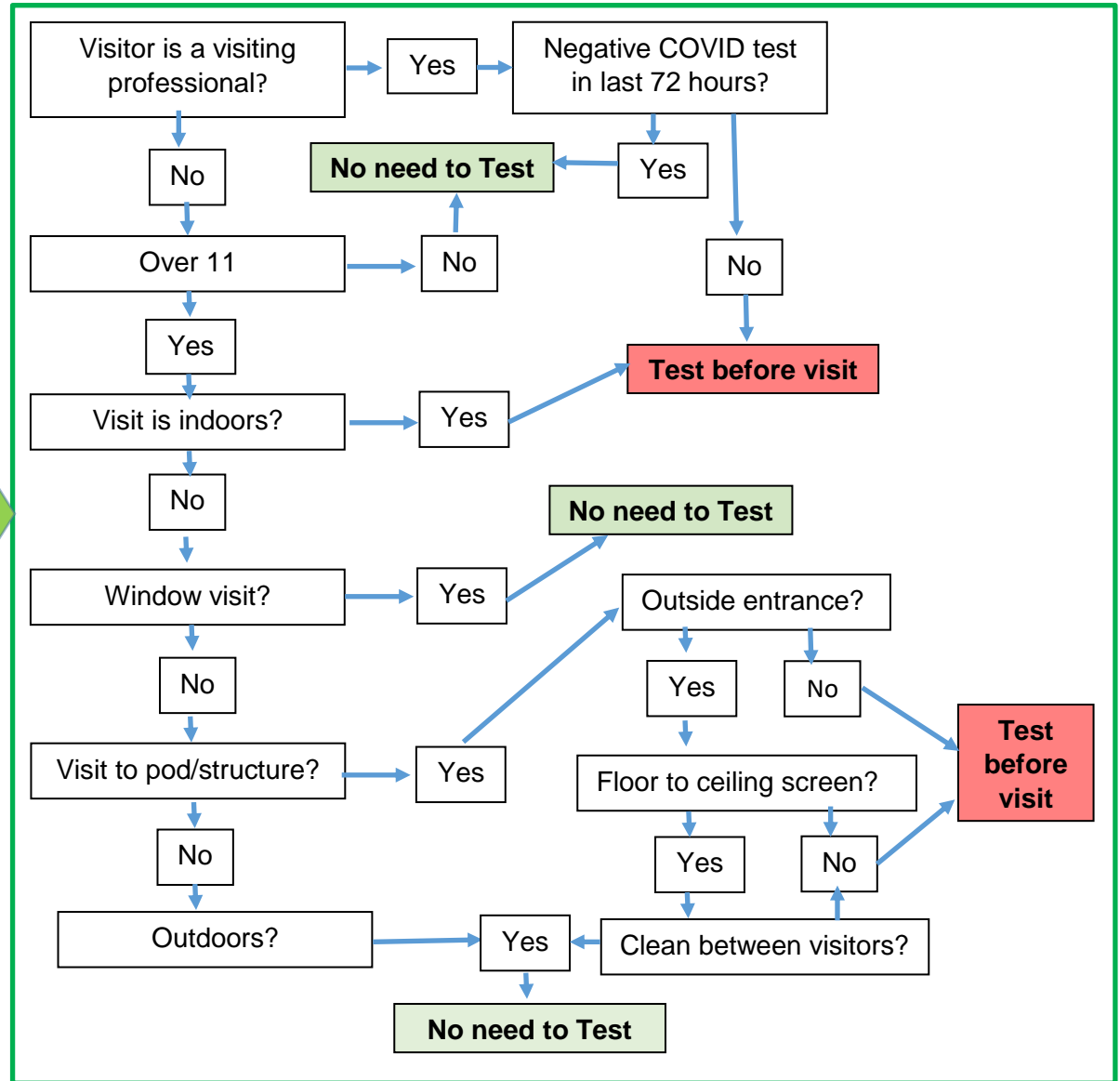
This process applies to staff working in residential care homes for adults who are participating in regular testing programmes for people who are well and do not have symptoms of COVID-19.



3. Testing for Visitors to Care Homes



**Exceptions apply – check guidance*



4. Staff Member Returning from Amber List Country

